

POTTER *The Symbol of Protection*



Potter Fire & Life Safety Systems



Potter Fire: We stand apart.

When it comes to fire protection companies, Potter stands apart. Apart from the competition and apart from the constraints of a large corporate mentality. Potter is the only independent manufacturer with a full line of fire alarm systems.

We have been a leader in fire protection since 1898. As a privately held business, Potter is able to quickly respond and react to our customers' needs and provide the individual attention and service that each of our customers deserve. Potter's reputation for quality and service has been the catalyst towards our focus for the design, development, and manufacture of the highest quality and most reliable life safety products available today.



This is the reason Potter provides an industry leading 5-year warranty on all major products.

With this new line of fire panels and our full complement of modules, detectors, and notification devices, we begin a new era in the fire alarm industry. As an independent manufacturer with a full line, we know you'll find it easy to do business with us. Give us a call, send us an email, or visit our website. We look forward to serving you!

800-325-3936

sales@pottersignal.com

www.pottersignal.com



Designed & Assembled in the USA /

Potter prides itself on offering a full line of fire alarm equipment assembled in St. Louis, Missouri and Branford, Connecticut. With engineering teams located in Maple Grove, Minnesota; Moline, Illinois; and Louisville, Kentucky; Potter continues to provide the latest innovations direct from America's heartland.

Training & Technical Support /

Potter knows how important it is for your maintenance staff to have the support they need to be able to perform inspections, maintenance, or even service on your systems should the need arise. That is why we provide extensive training opportunities and responsive tech support.

Training Opportunities /

Potter provides unmatched education and training opportunities on our full line of fire alarm systems. We let you choose your preferred method of training, including:



Live Training

Two day comprehensive training offered in a class environment



Training Videos

Video training that can be completed on your time, anytime



Webinars

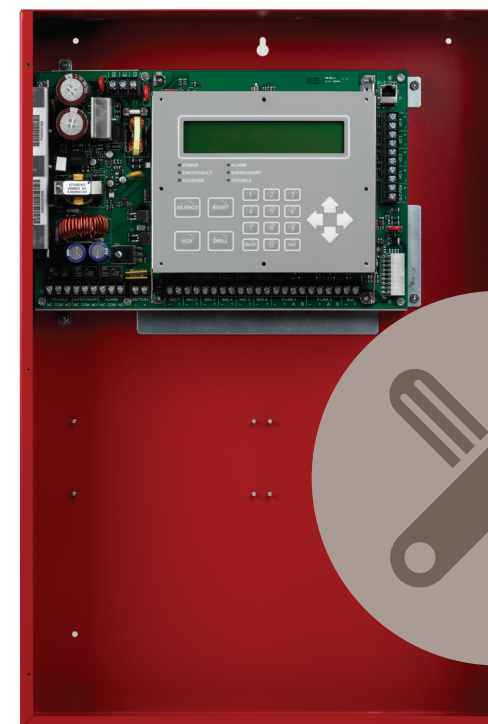
Distance learning with a live trainer on a variety of topics



Online Certification

Online certification for fire alarm panels

For training opportunities, visit: www.pottersignal.com/training



Technical Support /

As an education facility, your maintenance staff will have direct access to our industry leading tech support team. With less than 1-minute hold times and a support team based in the United States, we ensure that your time is spent getting timely solutions.

Our entire support staff has extensive field experience with fire alarm and emergency communication systems. We know these systems inside and out and can use our knowledge to help you assess and troubleshoot quickly and efficiently.

Call or email us and immediately get a hold of a real person who understands you and is there to help.

Technical Support

866-956-1211

800-768-8377

tech@pottersignal.com

Customer Service

800-325-3936

800-768-8377

orders@pottersignal.com

Office Hours

Monday - Friday, 8:00am - 5:00pm CST

A better way to connect

IP Connectivity /

With today's ever-expanding means of communication, it's important to be able to incorporate the same technology into your fire control system. We took this technology into account when we designed IP connectivity within our new panels.

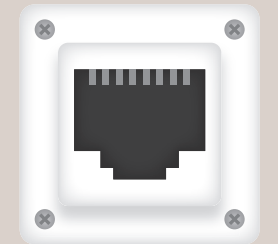
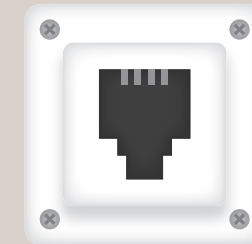
By eliminating the cost of phone lines, save big when using your building's existing network infrastructure. Additionally, the speed

of IP communication allows for event information to be sent to the central station within seconds.

Potter IP-enabled fire alarm systems are NFPA 72 2013, 26.6.3.1.5 compliant and allow for a single path of communication over IP. Potter IP-enabled fire alarm systems are also factory set to program for NFPA 72 2013 test time interval changes of 6 hours from 24 hours.

Communication Options /

Potter IP-enabled fire alarm systems are capable of both IP and phone line communication to central station. They comply with NFPA 72 2013 code by providing both out of the box.



Email & Reminders /

Potter IP-enabled fire alarm systems are email ready. History and Detector Status reports can be sent on demand as either a text or Excel® file for a professional look. The status events of the panel can be immediately emailed allowing users to be proactive in servicing customers.

Reports and the configuration file can be requested from the panel at any time by sending an email directly to the panel. Additionally, enhance your business by creating email reminders for your customers to schedule system tests or even to purchase new batteries.



Communication Over IP /

The world of communication in fire alarm is changing. The installation of POTs lines is being replaced by more reliable and faster communicating IP connections to monitoring stations.

Every Potter IP-enabled fire alarm system has an on board IP communicator that is listed to communicate with the SurGard III IP receiver. The system allows for multiple communication paths without requiring additional expensive hardware and connections.

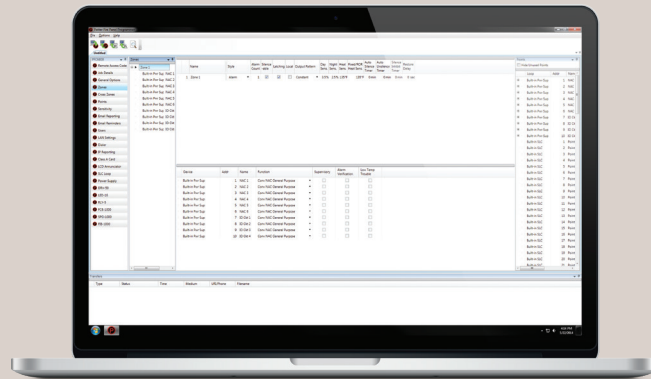


Potter Life Safety Software

Panel Programming /

Potter IP-enabled fire alarm systems have the ability to connect to a Local or Wide Area Network (LAN or WAN) and obtain an IP address. Once connected, the panel configuration software allows custom programming and configuration for all points using the network or a stand-alone computer.

We have designed our programming software to be simple yet robust. At the click of a mouse, you can fine-tune device behavior characteristics or create mapping zones for a more sophisticated fire protection system. All this is bundled in an easy-to-use drag and drop interface.



Facility Management Software /

Would you like to know what's happening on your Potter fire alarm control panels from a single location? Potter's Facility Management software is compatible with all Potter IP-enabled fire alarm systems and displays real-time events that occur on one or more panels.

To learn more and to download this FREE tool, visit:

ptr.us/FMtool



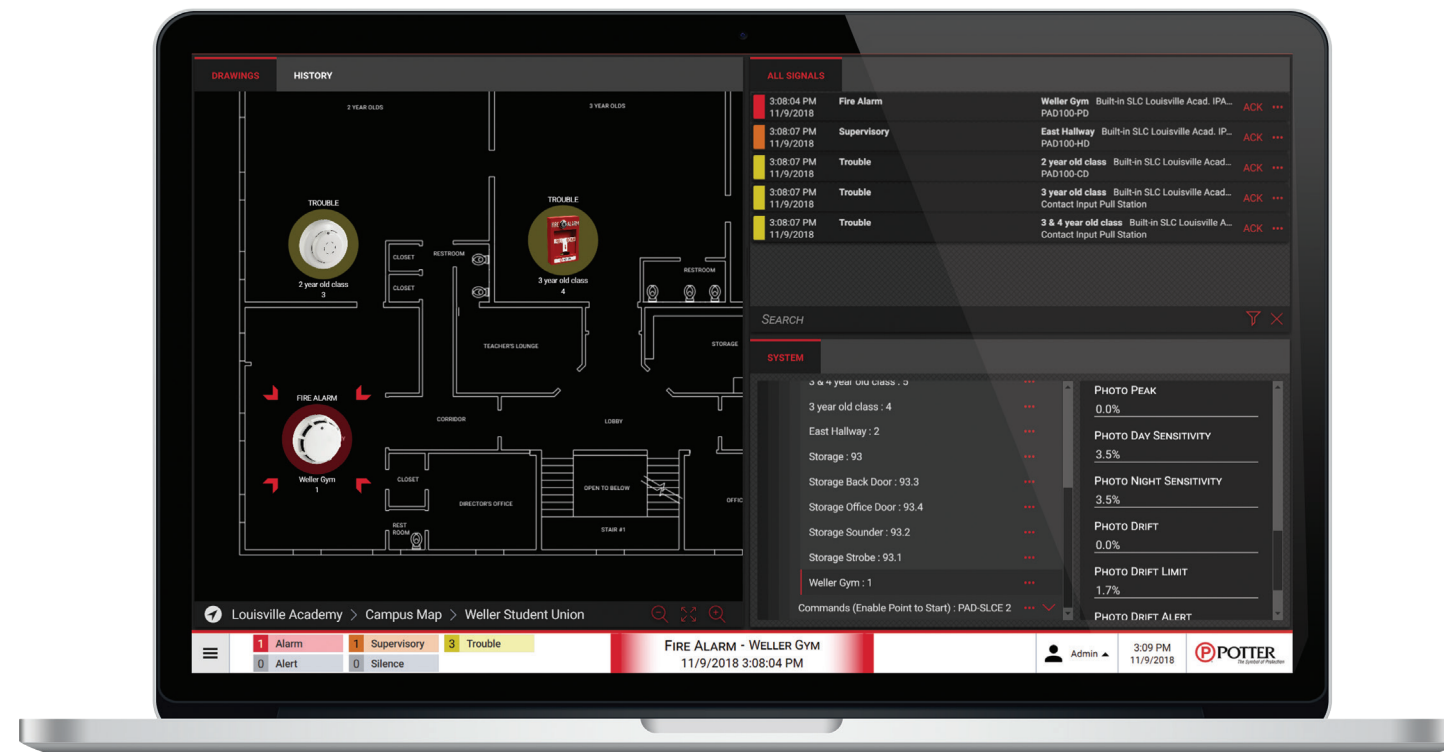
PotterNet Graphical Software /

The PotterNet Fire and Facility Supervising Station is a desktop application that facilitates the monitoring and control of IPA, AFC/ARC, and PFC-4064 fire alarm control panels. It utilizes a distributed client-server model for communication in order to reduce or eliminate single points of failure.

Available in both UL and non-UL Listed versions, PotterNet will monitor all compatible panels in a single building, on a local campus, or across multiple sites worldwide. Configurations with as many as 1,000 panels and 15 graphical PotterNet stations can address your largest system needs.

Learn more by visiting:

ptr.us/PotterNet



PotterNet

- ✓ Each station can monitor hundreds of panels across multiple campuses
- ✓ Panels & supervisory station networked over TCP/IP
- ✓ Over 300,000 point capacity
- ✓ History capable of logging 3 million events before a backup
- ✓ Thousands of customizable floor plans
- ✓ Easy to understand event notification summary
- ✓ Flexible licensing
- ✓ Command and control of local and remote panels
- ✓ Multiple monitor capability

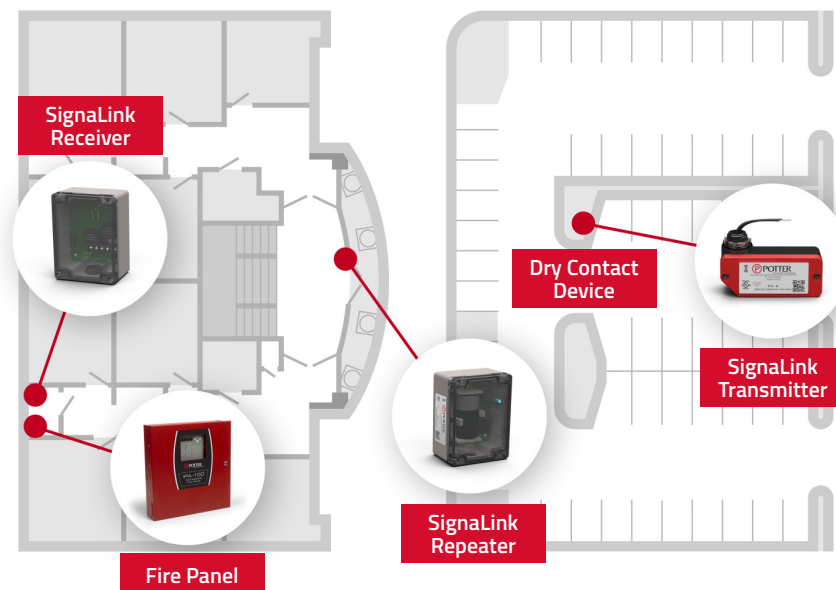


A perfect fit for any application

Simple and easy power solutions

Signalink™ Bridge / Wireless Supervisory System

The Signalink Bridge can monitor any dry-contact switch such as tamper or flow switches and transmit their status wirelessly to any fire alarm panel. The Signalink Bridge uses a wireless transmitter, installed with the switch being monitored, and a wireless receiver, installed with the fire alarm panel, to fully monitor the switch's state.

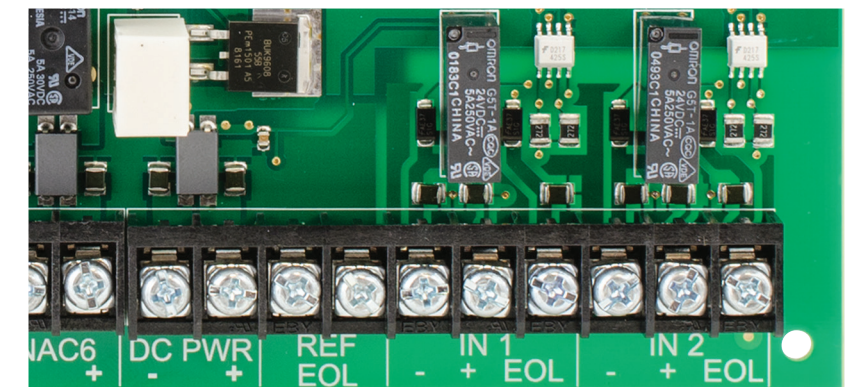


PSN Series /

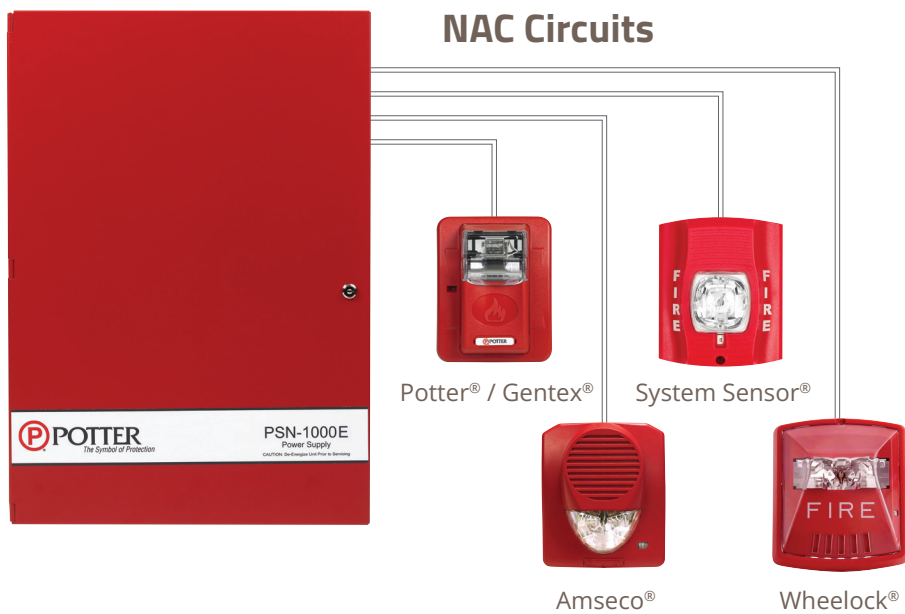
The PSN series of notification power supplies offers reliable notification power with unprecedented versatility. The power supplies offer either 6 or 10 amps of continuous power through 4 or 6 outputs respectively. Each output is rated at 3 amps and it may be used continuously without any derating.

Reference EOL /

The PSN Series power supplies use a standard 5.1k end of line resistor. Any end of line value between 2k and 27k can be used in retrofit applications where a value other than 5.1k is installed. All NAC wiring will then be supervised based on the existing value. The Reference EOL terminals on the PSN Series power supplies can save considerable time in these situations by avoiding hunting for the EOL resistor.

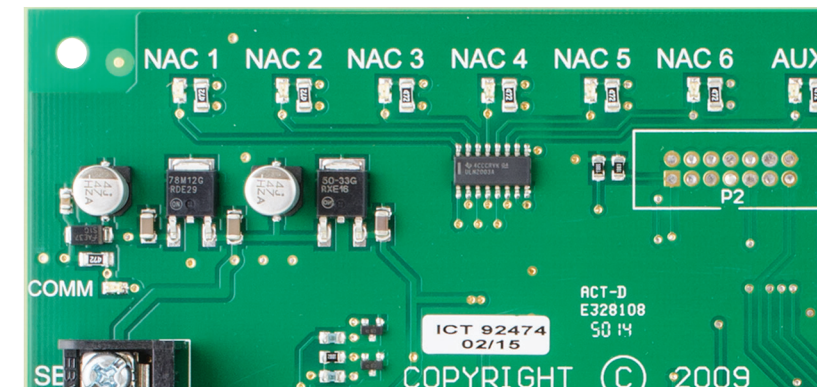


NAC Circuits



Quadrasync /

Our patented Quadrasync technology allows four different brands of strobes to be synced together using a Potter fire alarm control panel or PSN Series power supply. There is no need for the panel and devices to utilize the same protocol, making this technology a great feature for retrofit applications. Quadrasync works with the Potter®/Gentex®, Amseco®, System Sensor®, and Wheelock® protocols.

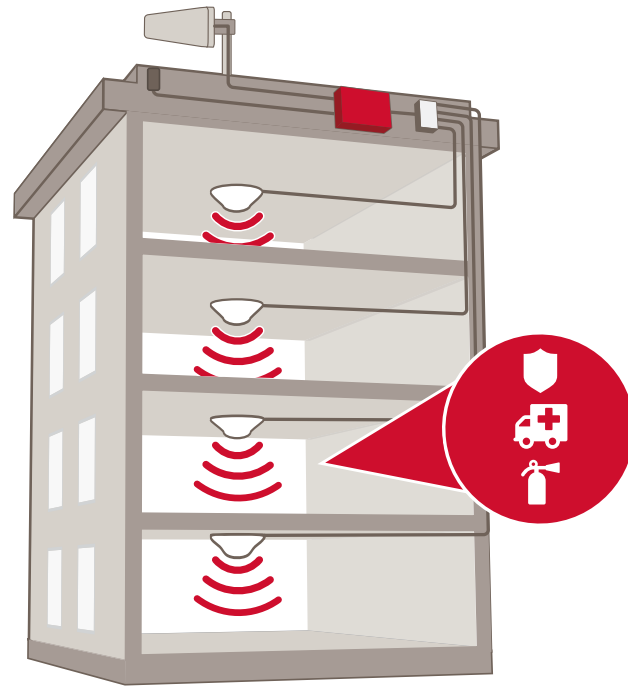


Diagnostic LEDs /

Each NAC has an indicator LED which provides two functions. The primary function is to follow the pattern that its NAC is programmed to output. The secondary function is to provide trouble indication alerting the installer as to which NAC is in trouble. This allows for quick and accurate troubleshooting. Each LED has trouble memory which can save considerable trouble shooting time when trying to identify a circuit with an intermittent problem.



BDA (Bi-Directional Amplifier)



TowerIQ™ Guardian Series Public Safety Signal Booster /



- Provides improved coverage for Public Safety 700 MHz (FirstNet), 800 MHz and 900 MHz (SMR)
- 80 dB gain for Public Safety Bands
- Built-in TowerIQ Sentry™ remote monitoring with ethernet port
- Meets NFPA 72 and NFPA 1221 for emergency communication systems in large buildings up to 80,000 square feet
- Class A or Class B systems available



Training & Licensing /

Potter provides comprehensive training on the successful install, program, and start-up of a TowerIQ BDA system and the required FCC Licensing for General Radiotelephone Operators.

The four day course will cover in depth the FCC elements 1, 3, and 8 along with the BDA systems with an examination conducted by an official FCC designated examiner. Ask us for more information and to get started!





At Potter Electric Signal Company,

QUALITY is the first order of business. Since 1898, we have served the fire and security industries on a worldwide basis. Today, we produce a wide array of products including the most innovative IP-based fire alarm control systems and monitoring devices. At Potter, we supply our customers with products that provide real world solutions for their unique needs and strive to provide them unequalled service and technical support.

Potter Electric Signal Company, LLC
13723 Riverport Drive
St. Louis, MO 63043

Office Hours:
Monday - Friday, 8:00 am - 5:00 pm, CST

800-325-3936
sales@pottersignal.com
www.pottersignal.com



8900071-C

Peer-to-Peer Networking /

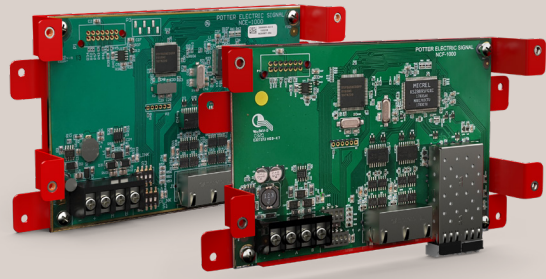
Potter's peer-to-peer networking solution allows all new and existing IPA Series, AFC Series, and PFC-4064 fire alarm panels to communicate on a dedicated ethernet or fiber network.

When networked, users can allow point control between panels, use a single panel for central station reporting for a network, and employ network annunciators for total system control on up to 200 panels.

With the simple installation of an ethernet or fiber-based P-Link card and a panel firmware update, users can network their existing systems without the need of purchasing new fire panels. Additionally, programming the network is done within Potter's Panel Programming Software and does not require an additional application.

Learn more by visiting:

pttr.us/networking



P-Link Networking Cards /

NCE-1000 Ethernet Networking Card

- Provides transient/earth fault detection on standard ethernet wiring
- Ports 1-4 are transient protected
- Dip switches used to set class of wiring

NCF-1000 Fiber Optic Networking Card

- Provides long range network capability via fiber
- Utilizes SFP (small form pluggable) modules for selecting multi mode or single mode
- Dip switches used to set class of wiring

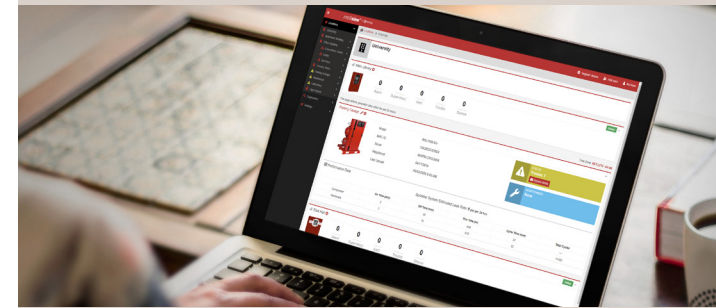
PotterNet Graphical Software /

The PotterNet Fire and Facility Supervising Station is a desktop application that facilitates the monitoring and control of IPA, AFC/ARC, and PFC-4064 fire alarm control panels. It utilizes a distributed client-server model for communication in order to reduce or eliminate single points of failure.

Available in both UL and non-UL Listed versions, PotterNet will monitor all compatible panels in a single building, on a local campus, or across multiple sites worldwide. Configurations with as many as 1,000 panels and 15 graphical PotterNet stations can address your largest system needs.

Learn more by visiting:

pttr.us/PotterNet



IntelliView /

Monitors your fire panel or nitrogen generator from anywhere in the world with industry leading smart features. Potter fire panels report all system statuses instantaneously. Any point can be accessed to deliver status and programmed settings. This enables users to quickly respond to system emergencies or maintenance needs.

Learn more by visiting:

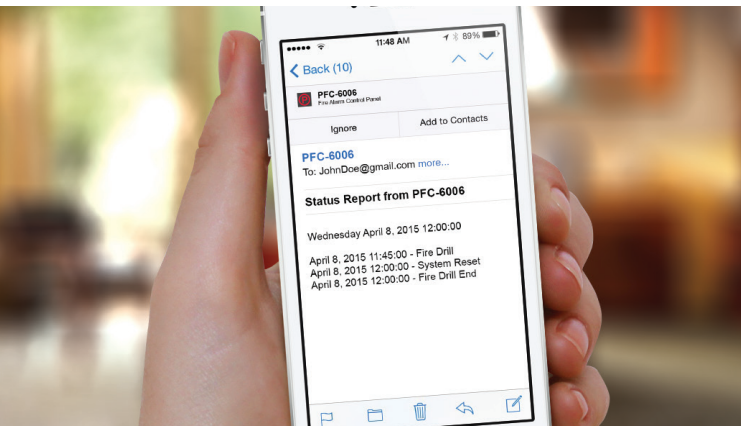
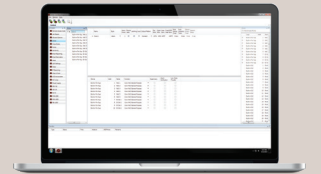
pttr.us/intelliview

Panel Programming /

Once connected to a network, the panel configuration software allows custom programming and configuration for all points using the network or a stand-alone computer. Fine-tune device behavior characteristics or create mapping zones for a more sophisticated fire protection system. All this is bundled in an easy-to-use drag and drop interface.

Learn more by visiting:

pttr.us/panel-programming



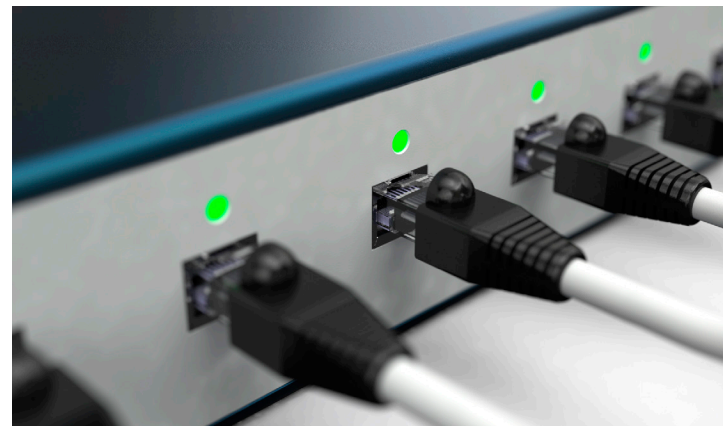
Email & Reminders /

Potter IP-enabled fire alarm systems are email ready. History and Detector Status reports can be sent on demand as either a text or Excel® file for a professional look. The status events of the panel can be immediately emailed allowing users to be proactive in servicing customers.

Reports and the configuration file can be requested from the panel at any time by sending an email directly to the panel. Additionally, enhance your business by creating email reminders for your customers to schedule system tests or even to purchase new batteries.

Learn more by visiting:

pttr.us/ip-connectivity



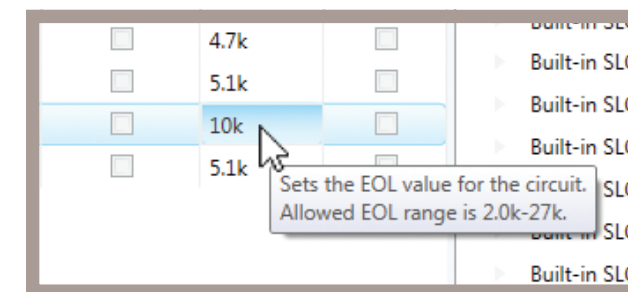
IP Connectivity /

With today's ever-expanding means of communication, it's important to be able to incorporate the same technology into your fire control system. We took this technology into account when we designed IP connectivity within our new panels.

By eliminating the cost of phone lines, save big when using your building's existing network infrastructure. Additionally, the speed of IP communication allows for event information to be sent to the central station within seconds. Every Potter IP-enabled fire alarm system has an on board IP communicator that is listed to communicate with the SurGard III IP receiver.

Learn more by visiting:

pttr.us/ip-connectivity



Programmable EOLs /

NACs and I/Os have programmable EOLs between 2.0k and 27k. This can be achieved manually by installing the resistor and using the panel's LEARN function, or automatically through the programming software.



Dipswitch Programming /

Potter Protocol devices are now programmed through easy-to-use dip-switches. This makes it easier than ever to address SLC devices on-site and requires no external hardware.



Addressable Fire Panels /



IPA-4000

127 up to 4,064 Addresses
6 Programmable NACs
10A Power Supply
4 I/O Circuits
Listed for both Water and Chemical (Agent) releasing
UUKL Listed for Smoke Control



IPA-100

127 Addresses
2 Programmable NACs
5A Power Supply
2 I/O Circuits
Listed for both Water and Chemical (Agent) releasing
UUKL Listed for Smoke Control



IPA-60

60 Addresses
2 Programmable NACs
5A Power Supply
2 I/O Circuits
Listed for both Water and Chemical (Agent) releasing
UUKL Listed for Smoke Control

Voice Evacuation /



IPA-4000V

IPA EXCLUSIVE WaveNet Text-To-Speech audio messages
Up to 31 amplifiers
Industry leading 8 speaker circuits per amplifier for up to 248 total Class B or Class A circuits



FFT-1000

Fire Fighter Telephone System
24 Class B or 12 Class A phone circuits
Expandable up 96 Class A or 96 Class B phone circuits
P-Link device



SCA

Single Channel
25W, 50W, and 100W models
25V or 70V Selectable models



DCA

Dual Channel
50W or 100W models
25V
70V capable with optional 70V-1000 converter
Backup amplification using BUA-1000 module

Conventional Panels /



PFC-4064

6 Class B, 3 Class A Zones
Expandable to 192 Class B, 96 Class A Zones
5A Power Supply
4 NAC Circuits rated at 3A each
Solepath IP Communicator
Email events & reminders
Quadrasync Support



PFC-6006

6 Zones
1A Power Supply
1 NAC Circuit rated at 0.5A
Built-in dual line DACT
Sole Path IP Communicator
Email events & reminders



PFC-4410G3

Multi-Hazard Capability
Seven Programmable Class B Initiating Circuits
Four Class B Output Circuits
Programmable Cross Zoning including AND/OR capability
Supervised Microprocessor

Power Expanders /



PSN-64/106

10/6A Power
4/6 NACs
Quadrasync Support
Reference/Variable end-of-line resistor feature



PSN-1000(E)

Intelligent Power Expansion
10A Power
6 Class B, 3 Class A NACs
NACs rated at 3A each
2 addressable input points
(E) Extra large cabinet to house up to 6 P-Link Expander

P-Link Circuit /



FIB-1000

Fiber Interface Module



SPG-1000

Serial Parallel Gateway



FCB-1000

Fire Communication Bridge



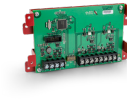
DRV-50

LED Driver Expander



RLY-5

Relay Module Expander



MC-1000

Multi-Connect Expander



PAD100-SLCE

Potter PAD SLC Expander



IDC-6

Initiating Device Circuit Expander



RA-6500R

160 Character LCD Remote Annunciator



RA-6075R

32 Character LCD Remote Annunciator



LED-16

LED Remote Annunciator

SLC Devices /



PAD300-6DB

Detector Base



PAD300-4DB

Detector Base



PAD300-SB

Sounder Base



PAD300-LFSB

Low Frequency Sounder Base



PAD300-IB

Isolator Base



PAD300-RB

Relay Base



PAD300-PD

Smoke Detector



PAD300-DD

In-Duct Smoke Detector



PAD300-HD

Heat Detector



PAD300-CD

CO Detector



PAD300-PHD

Smoke/Heat Detector



PAD300-PCD

Smoke/CO Detector



PAD-SPKB Series

Speaker Base



PAD-PCHD Series

Smoke/Heat/CO Detector



PAD100-TRTI

2 Relay 2 Input Module



PAD100-RM

Relay Module



PAD100-ZM

Zone Module



PAD100-IM

Isolator Module

LFSBB-W

Back Box for PAD-SPKB



PAD100-NAC

NAC Module



PAD100-LED

Remote LED Module



PAD100-SM

Speaker Module



PAD100-OROI

1 Relay 1 Input Module



PAD100-DIM

Dual Input Module



PAD100-SIM

Single Input Module



PAD100-MIM

Micro Input Module



PAD100-LEDK

Addressable LED with Key Switch



PAD300-DUCT

Duct Detector



PAD300-DUCTR

Duct Detector with Relay



PAD100-DRTS

Duct Remote Test Switch



PAD100-PSSA/PSDA

Single/Dual Action Pull Station

NAC Devices /



Mini Horns



Horns & Strobes



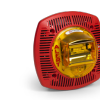
Speakers & Strobes



Weather Proof

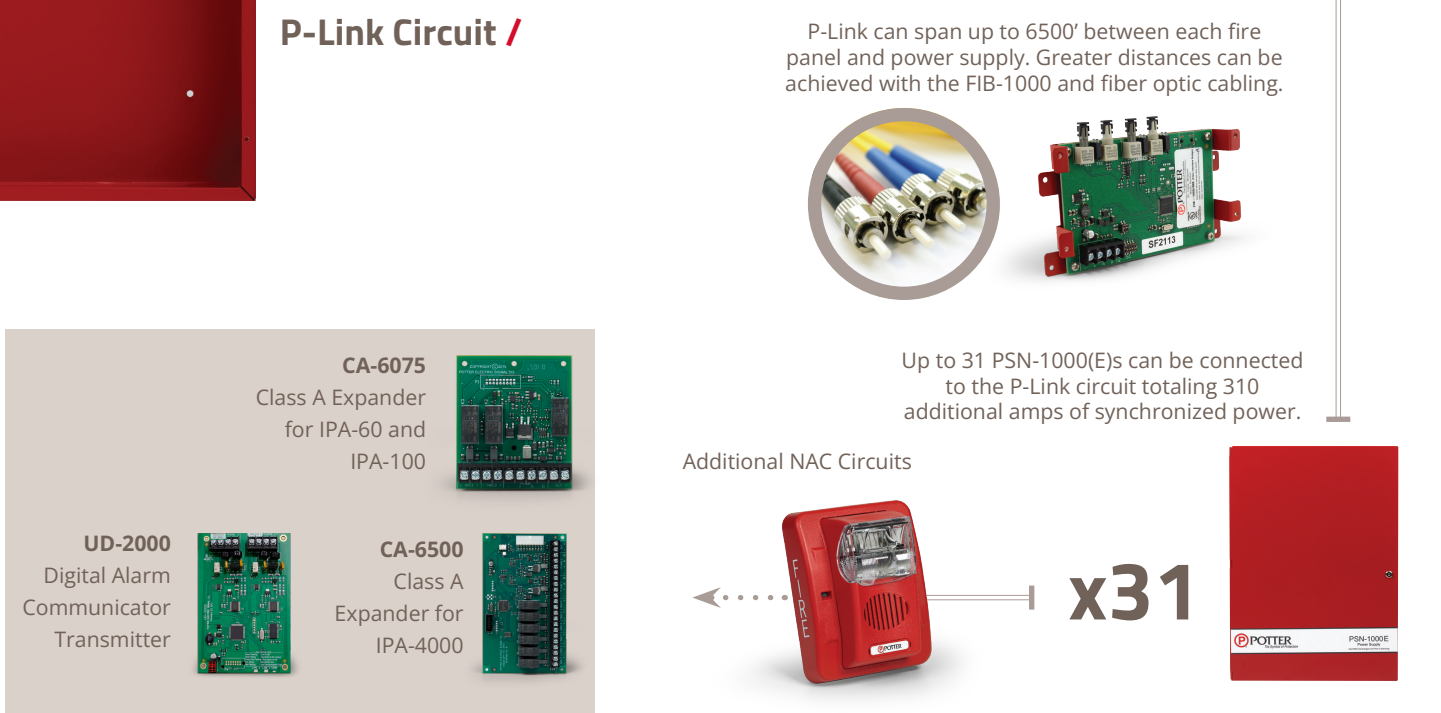
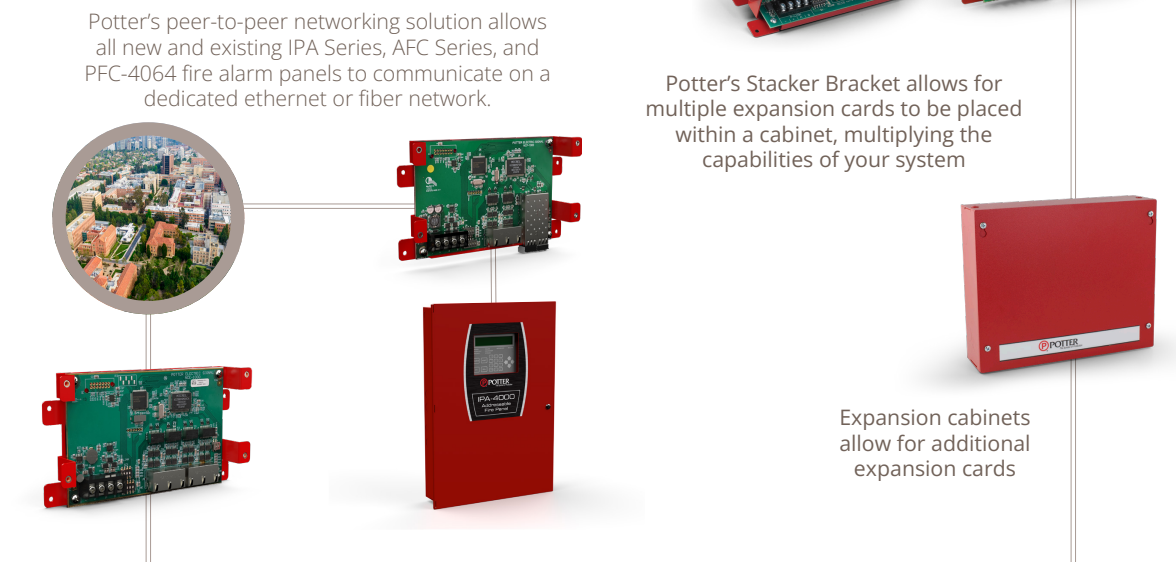
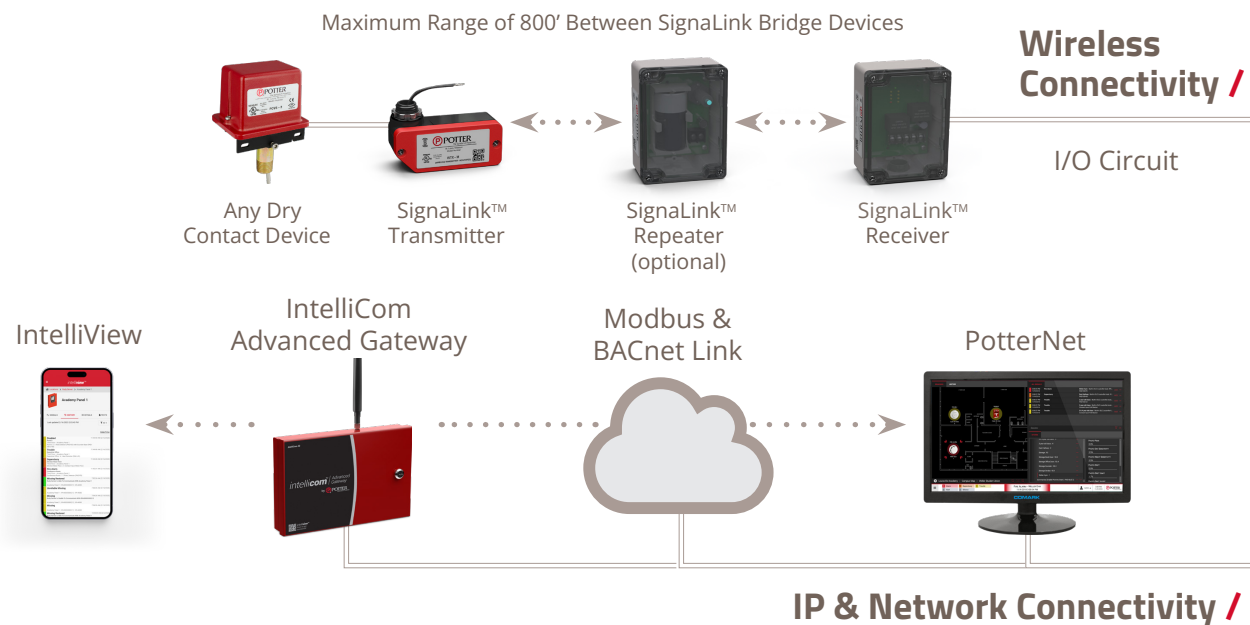
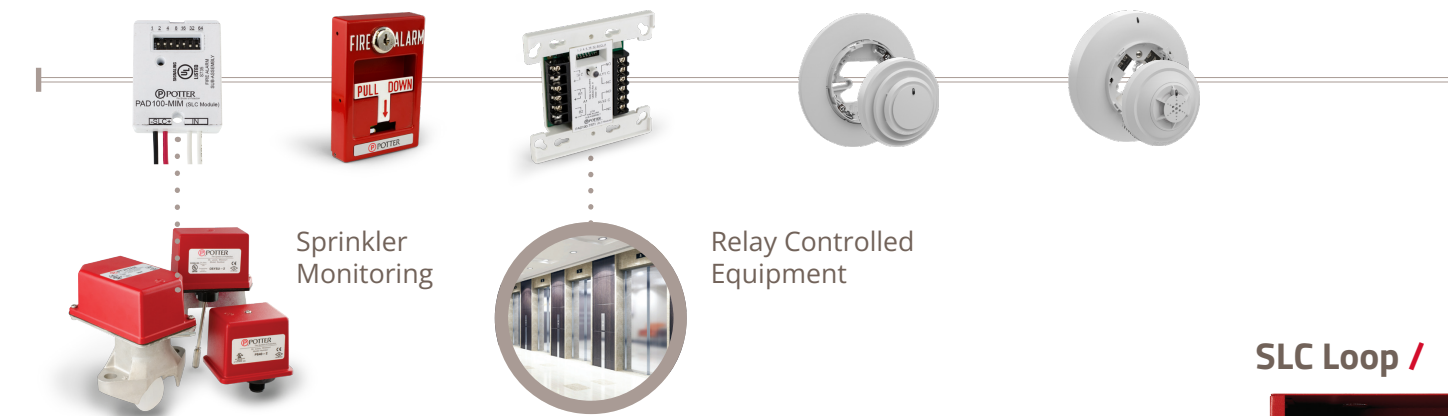


Low Frequency



Mass Notification

Fire Panel Connections /



Engineered Systems Distributor Program /

At Potter we understand that to be successful, our Engineered Systems Distributors need to be successful. We take this partnership role with our Engineered Systems Distributors very seriously. A great deal of effort has been made to ensure that our ESD program can provide the products, tools, and support necessary for you to profitably grow your fire alarm systems business with Potter as your cornerstone product line. Some of the advantages you will find as a Potter ESD are:



Protected Territories /

Potter is committed to helping you protect your customer base and improve your profit margins. We will not saturate your area with more Potter Engineered Systems Distributors than what is required to provide reasonable Potter representation and to meet the service level expectations of the end users and specifiers in your market area.

Flexible Service Options /

In today's marketplace, it is imperative to protect your customer base from service and monitoring takeovers but also be able to provide systems that can be serviced using over-the-counter equipment. As a certified Potter Engineered Systems Distributor, you will be able to do both with a single product line. Using Potter's unique Protected Mode feature, your installations can be secured to prevent unauthorized service, or they can remain open to provide the end user additional service choices. No longer are you required to support 2 different series of fire alarm equipment in order to adapt to these different job requirements. This reduces inventory requirements and provides a great deal of flexibility in the field.

PotterLink Server /

Online management of your technicians' access to the Potter IPA programming software through the PotterLink™ server system. This provides a much more secure and flexible method for controlling who has access to IPA programming software and eliminates the need for dongles!

Designed with Profitability in Mind /

Potter's feature rich and cost effective IPA series of IP enabled fire alarm systems will help your organization be more competitive and profitable on the small to medium size projects that make up the majority of the market. Potter's IPA-4000 system can be scaled to support over 4,064 SLC device addresses and provide you these same competitive advantages in the large end of the market. This includes support for campus and other multi-building applications where multiple panels can be connected to share a single communication path to a central station.

Vendor Partners /



Mass Notification and voice evacuation solutions



Explosion proof and special application signaling devices



Public Safety Radio Enhancement Systems for NYC and other regions



Fire alarm signaling and single station smoke alarms



Wireless mesh network communications



Air sampling smoke detection and special application detection equipment

Integration Partners /



Special application flame and smoke detection devices



Graphic annunciators, smoke control panels, and accessories



Mass Notification and voice evacuation solutions



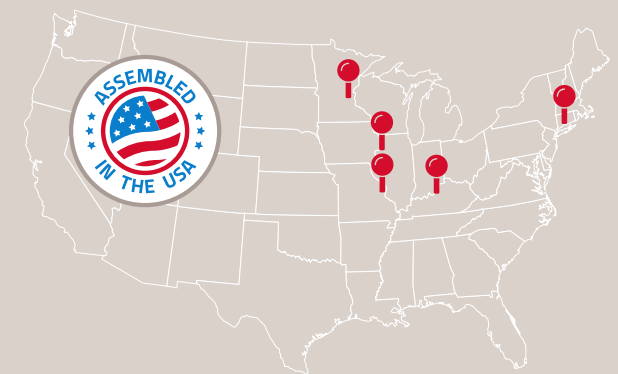
Optical beam smoke detectors



Product protection from theft and damage



Fire alarm system testing products



Designed & Assembled in the USA /

Potter prides itself on offering a full line of fire alarm equipment assembled in St. Louis, Missouri and Branford, Connecticut. With engineering teams located in Maple Grove, Minnesota; Moline, Illinois; and Louisville, Kentucky; Potter continues to provide the latest innovations direct from America's heartland.

