



SYSTEM
OVERVIEW

COMPACT ADDRESSABLE FIRE ALARM SYSTEM

POLON 3000

COMPACT ADDRESSABLE FIRE ALARM SYSTEM



POLON 3000

Purpose

The addressable, compact POLON 3000 fire alarm system designed for detection and signaling the fire, notifying appropriate emergency services, and controlling fire protection devices.

It is dedicated to protect small and medium-sized buildings like hotels, schools, libraries, museums and other objects, where many addressable elements are not required.

A full communication is provided (using detection line) with other control panels, such as universal control panel (UCS 6000), fire extinguishing panel (IGNIS 2500), fire protection power supply (P2B 6000) or gas detection control panel (CDG 6000).

It perfectly fits the installations due to the possibility of sending a substantial amount of digital information to integration and supervision systems as well as to fire monitoring systems.

Genuine detection loops protocol allows reliable data exchange between appropriate control panels and line elements.

All line elements are equipped with built-in short-circuit isolators with the possibility of software activation on and off.

Soft-addressing for all loop devices is made by panel with proper PC software.

With the use of radio detectors and manual call points, POLON 3000 system can also be installed wherever it is not possible to use detection loops with wires.

Three versions of POLON 3000 control panel are available: POLON 3064, POLON 3128, POLON 3256, which delivers suitable fire protection of different size of the secured facilities.

Functionality

POLON 3000 control panels can create up to 16 zone groups and notify their status with LED indicators (information about alarm for a specific group of detection zones).

One of 13 alarm variants can be selected for each zone thus optimizes the use of fire detection system and allows to detect fire in specific, individual conditions.

With extensive software, the control panel enables construction of installation with a flexible physical and logical structure.

Various types of outputs in POLON 3000 control panel enable to control of signalling and fire protection devices.

Regardless, control operation possibilities are offered by new addressable input-output elements of the 3000 series.

There is also possibility of using already available elements of the series 6000 and 4000, installed on detection loops.

Fire protection equipment which is linked to panel can have its own user descriptions (in addressable versions).

USB, RS-485 and Ethernet communication ports allow connection the control panel to the computer digital monitoring system, integration and supervision system. Statuses of external devices or circuits can be supervised with input-output elements of the EKS-3000, 6000 series and 4000, installed on detection lines.

POLON 3000 logs up to 4000 events, that occurred during the supervision of the object. The event log can be displayed on the control panel's display or downloaded by computer application. Information is arranged by date and time of the event and can be saved or printed.

• ADDRESSABLE ELEMENTS POLON 3000



- ▶ DUO-3000 / DUO-3000AD with built-in siren*
Universal optical smoke detector with dual (IR+UV)
- DUT-3000AD with built-in siren*
Multi-sensor, multi state smoke and heat detector
- DOT-3000 Universal smoke and heat detector
- G-40 Detector base
- PG-40 Masking ring (for G-40)

*base G-40S as a kit



- ▶ DOP-3000 Addressable/conventional beam smoke detector
- E39-R8 Prismatic reflector for beam smoke detector (5 - 50 m)
- 4 x E39-R8 Set of reflectors for beam smoke detector (50 - 100 m)



- ▶ ACR-4001 Wireless detectors interface
- DUR-4047 Wireless optical smoke detector (base as a kit)
- ROP-4007 Wireless manual call point (flush mounting, indoor)
- ROP-4007H Wireless manual call point (flush mounting, outdoor)
- RM-60-R Assembling frame (for surface mounting)

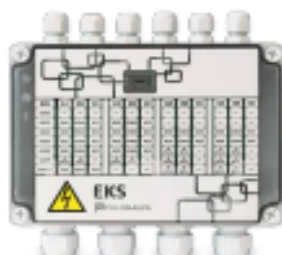


- ▶ ROP-3000 Manual call point (flush mounting, indoor)
- ROP-3000H Manual call point (flush mounting, outdoor)
- RM-60-R Assembling frame (for surface mounting)

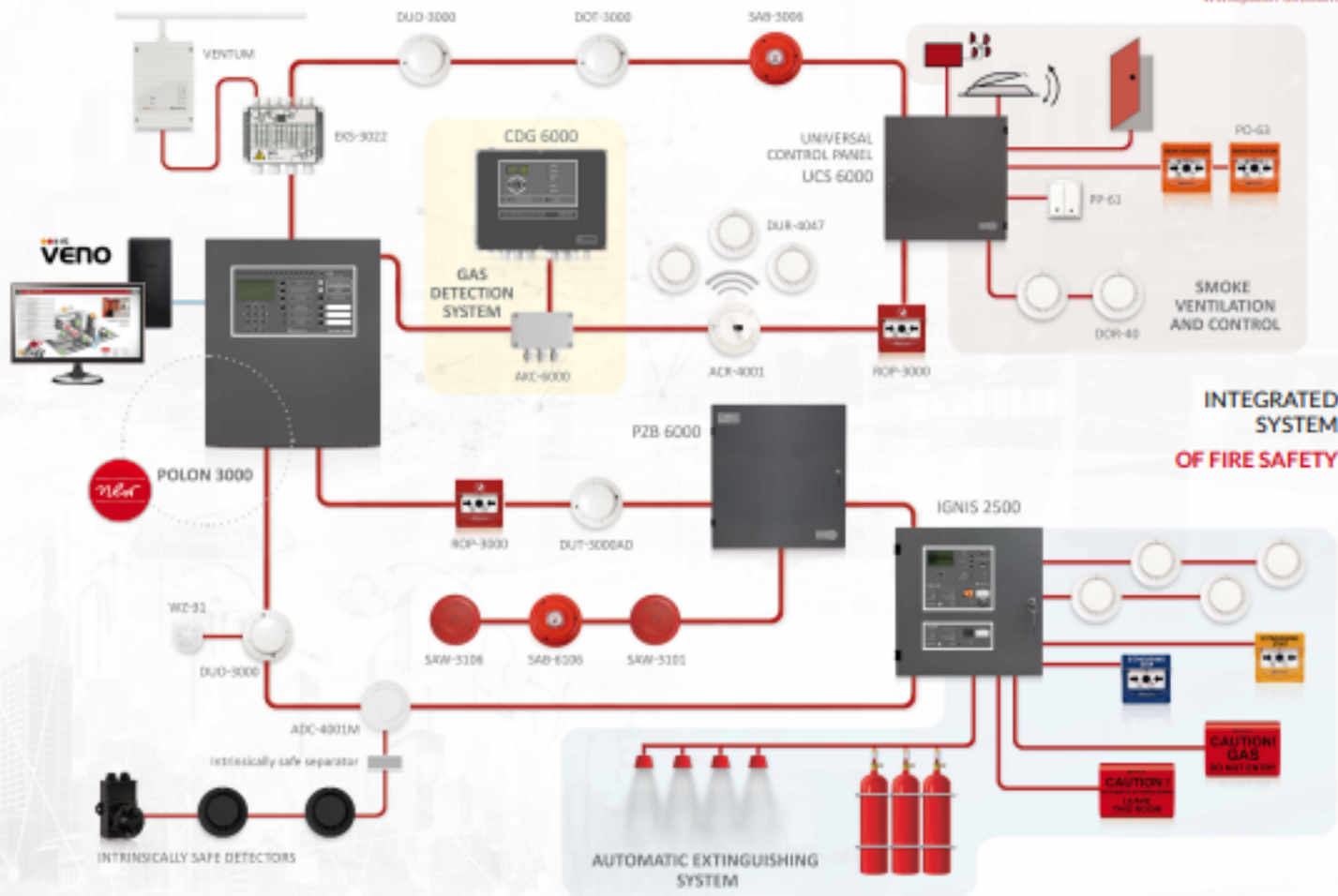


- ▶ SAW-300X Addressable siren with tones*
- SAB-300X Addressable acoustic sounder-beacon*

*base G-40S as a kit



- ▶ EKS-3022 I/O module EKS-6022 2 in / 2 out
- EKS-6222P I/O module EKS-6222P 2 out HV / 2 in HV / 2 in LV



INTEGRATED SYSTEM OF FIRE SAFETY

perfectly designed SAFETY

► POLON 3000
COMPACT ADDRESSABLE FIRE ALARM SYSTEM

Foto: Shutterstock.com, Alfa, Fotogramma.com

UCS 6000 UNIVERSAL CONTROL PANELS



- ▶ MGS-60 Main controller
- MGL-60(8A) Zone module
- MPW-60 High voltage I/O module (2 out, 2 in)
- MZU-60 Power supply supervising module
- MPD-60 Low voltage I/O module (2 out / 2 in)
- MKA-60 Addressable module for POLON 3000, POLON 4000 and POLON 6000 panels
- PO-63 Ventilation button (orange) flush mounting; 3 x LED + reset switch
- PO-62 Ventilation button (orange) flush mounting; 1 x LED + reset switch
- PO-61 Ventilation button (orange) flush mounting; 1 x LED
- RM-60-O Assembling frame (orange) for surface mounting
- PP-61 Daily ventilation button (flush mounting)
- PP-62 Daily ventilation button (surface mounting)

SDG 6000 GAS DETECTION SYSTEM



- ▶ CDG 6000 Gas detection control panel
- PSG-6001 CNG (natural gas)
- PSG-6002 LPG (propane-butane)
- PSG-6003 CO (carbon monoxide)
- PSG-6103 CO (carbon monoxide); loop powered
- AKC-6000 Digital interface
- TO-6000 Warning boards

PZB 6000 POWER SUPPLY UNITS



- ▶ PZB 6000 Fire approved power supply unit 2 A, 4 A, 8 A, 16 A, 24 V DC

EX DETECTORS



- ▶ DUR-40Ex Universal optical smoke detector, ATEX approved
- PUO-40Ex Flame detector (UV), ATEX approved
- TUN-38Ex Universal heat detector, ATEX approved (installation without base)
- PPW-40REx Fireproof triple IR flame detector

IGNIS 2500 CONVENTIONAL EXTINGUISHING SYSTEM



- ▶ **IGNIS 2500** Two zone extinguishing control panel
- PU-61** START button (yellow)
- PW-61** STOP button (blue)
- RM-60-Y** Assembling frame (yellow for START button - surface mounting)
- RM-60-B** Assembling frame (blue for STOP button - surface mounting)
- SG-1-1** Optical-acoustic indicator (application outside extinguishing area)
- SG-1-2** Optical-acoustic indicator (application inside extinguishing area)



- ▶ **DOR-40** Optical smoke detector
- DUR-40** Optical, universal smoke detector
- TUP-40** Rate-of-rise heat detector
- DOT-40** Smoke and heat detector
- TOP-40** Heat and flame detector
- G-40** Detector base
- P-40** Masking ring (for G-40)

OTHERS



- ▶ **TSG-60** GSM service transmitter
- VENO** Visualisation and integration system
- PA VENO** Certified system integrating fire protection devices for visualisation and control



Small and middle-sized objects



User friendly interface



Easy and fast configuration



Nonproblematic installation



Low cost of maintenance



Wide range of cooperated equipment

CONTROL PANEL VARIANTS **POLON 3000**

- **POLON 3064**
up to 64 addressable elements
- **POLON 3128**
up to 128 addressable elements
- **POLON 3256**
up to 256 addressable elements

| No. | Element type | Working on the detection line | | Description |
|-----|-------------------------------------------------------------------------------------------------------------------|-------------------------------|------|-------------------------------------------------------------------------------------------|
| | | 4000 | 6000 | |
| 1 | DOP-6001 | + | + | fire warning device |
| 2 | TUN-6046 TUN-6043 | + | + | fire warning device |
| 3 | EKS-6000 | - | + | input/output element |
| 4 | SAW-6001 | + | + | tone sounder |
| 5 | SAW-6006 | + | + | tone-voice sounder |
| 6 | SAB-6001 | + | + | optical, tone sounder |
| 7 | SAB-6006 | + | + | optical beacon, tone-to-voice |
| 8 | DUT-6046AD | + | + | fire warning device with acoustic sounder device |
| 9 | DUO-6046AD | + | + | fire warning device with acoustic sounder device |
| 10 | DOT-6046 DOT-6043 | + | + | fire warning device |
| 11 | DUO-6046 DUO-6043 | + | + | fire warning device |
| 12 | UCS 6000 | + | + | universal control panel |
| 13 | AKC-6000 | - | + | input/output device for addressable communication |
| 14 | Devices containing the MKA module: IGNIS 2500, PZB 6000 and CDG 6000, mCDG 6000 indirectly through AKC-6000 | - | + | MKA - module for communication via the addressable line, compatible with 6000 protocol |
| 15 | DUT-6046 | + | + | fire warning device |

Line elements of series 4000 - compatible with **POLON 3000** control panel

| No. | Element type | Working on the detection line | | Description |
|-----|----------------|-------------------------------|------|---------------------------|
| | | 4000 | 6000 | |
| 1 | DOR-4046 | + | +* | fire warning device |
| 2 | DIO-4046 | + | +* | fire warning device |
| 3 | TUN-4046 | + | +* | fire warning device |
| 4 | DPR-4046 | + | +* | fire warning device |
| 5 | DOT-4046 | + | +* | fire warning device |
| 6 | DUR-4046 | + | +* | fire warning device |
| 7 | DUR-4047 | + | +* | fire warning device |
| 8 | DUR-4043 | + | +* | fire warning device |
| 9 | DIO-4043 | + | +* | fire warning device |
| 10 | DOR-4043 | + | +* | fire warning device |
| 11 | TUN-4043 | + | +* | fire warning device |
| 12 | ACR-4001 | + | + | radio detector adapter |
| 13 | ADC-4001M | + | + | conventional line adapter |
| 14 | EKS-4001 | + | - | input/output element |
| 15 | EWS-4001 | + | - | control element |
| 16 | EWK-4001 | + | - | control element |
| 17 | SAL-4001 | + | + | sounder |
| 18 | ROP-4001M | + | + | manual call point |
| 19 | ROP-4001MH | + | + | manual call point |
| 20 | ROP-4007/4007H | + | + | manual call point |

*V 6.0, V 7.0 or newer version of software in line elements is required